

The Potential Dangers and Hidden Opportunities of a Measurement Program

The slide features several decorative circles. Three solid light purple circles are positioned behind the title text. Below the title, there are two more solid light purple circles on the left and one hollow light purple circle on the right.

Steve Coffman
ISMA Conference
September 14, 2006

The Setup

A decorative graphic at the top of the slide consists of two overlapping circles on the left and three separate circles on the right. The leftmost circle is solid light purple, and the one it overlaps is a white circle with a light purple outline. The three circles on the right are arranged horizontally: a solid light purple circle, a white circle with a light purple outline, and another solid light purple circle.

- Current position
- Offered opportunity
 - Join, start, revamp ...
 - Asked for it, Defined it yourself, Job hunting, ...

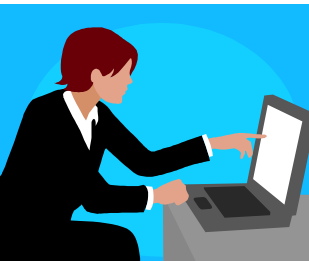
Our Options



● Accept



● Learn more and Decide



Dismiss

Consider



Before Deciding



- Know yourself / Your thresholds
- What are the Rewards?
- What are the Risks?

- What are the Hidden Opportunities / Potential Dangers?

Hidden Opportunities (Rewards - Part 1)

- Promotion ?
- Support / Enable development improvement
- Support the company

Potential Danger (Risks - Part 1)

- Is there 'True' sponsorship?
- What are the expectations?

Hidden Opportunities (Rewards - Part 2)

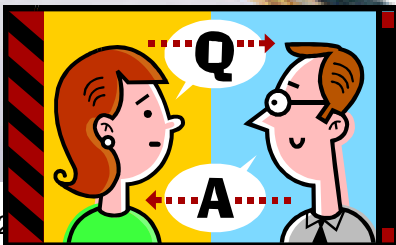
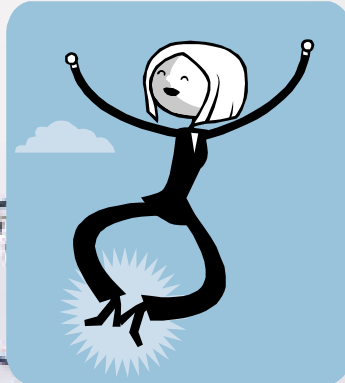
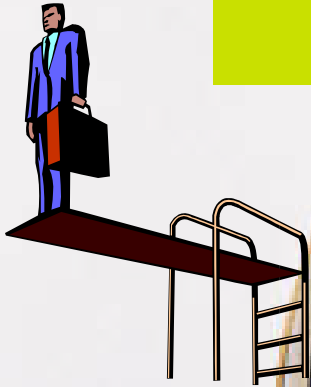
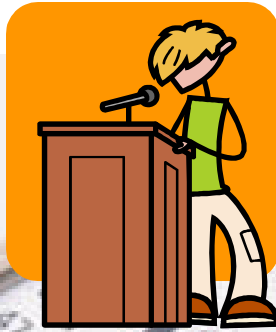
- Career change
- Self growth
- Best chance measurement will be done right
- Improve department
- Better products - Better process
- Decisions based upon data
- Visibility throughout company

Potential Danger (Risks - Part 2)

- What am I doing now?
- Do I want to do this?
- Am I able to do this?
- What is career step after this?

Potential Danger (Risks - Part 3)

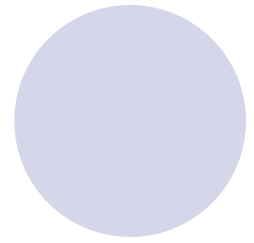
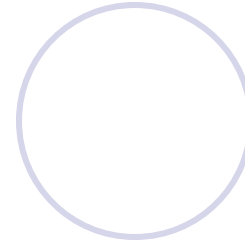
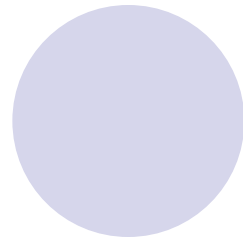
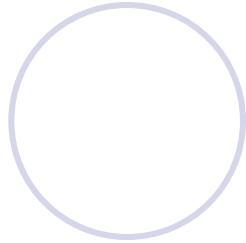
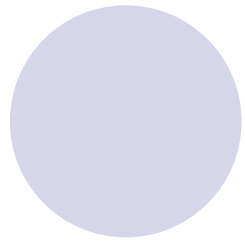
- Is this a set-up? What is the motivation? What has changed?
- What are expectations?
 - Cost
 - Schedule
 - Results
 - Longevity
- Can we handle the truth?
- Is management ready?
- Is the company ready?



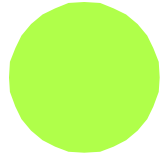
Make a decision



- Do your homework, Weigh the options, Know Thyself, Choose
 - Don't let it be chosen for you.
- "Do, or Do Not. There is no Try." - Yoda
- Make a plan
- Execute the plan



● Questions





Final Input

The diagram consists of two groups of three circles each. The first group on the left has a solid light purple circle on the left, a white circle with a light purple outline in the middle, and a solid light purple circle on the right. The text 'Final Input' is positioned to the left of the first circle in this group. The second group on the right has a solid light purple circle on the left, a white circle with a light purple outline in the middle, and a solid light purple circle on the right.

- Measure

- Contact Info:

Steve Coffman

Steve.Coffman@paraswift.com

630.778.8237