

Countflation

Your Handy Guide to Increasing the Size of your Portfolio

2006

International Software Measurement & Analysis Conference

September 15, 2006

Steve Keim

The David Consulting Group
Achieving Software Excellence

www.davidconsultinggroup.com

More = Better

- I have had hundreds of system owners tell me that their application should have more functionality counted (especially when money allocation is involved).



Warning

- The following techniques represent **INCORRECT** counting approaches that I have observed over the years
- PLEASE Do ***NOT*** use these approaches as a guideline of how to count correctly

Wisdom of the Ages

I will now share with you the lessons that I have learned throughout the ages of function point analysis on how to increase the size of the portfolios, applications, and projects you are sizing.

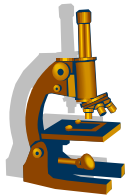


Step 1 – Define Application Boundary



- “The boundary is determined based on the User’s View”
- “The boundary between related applications is based on separate functional areas as seen by the user”
- CPM 4.2, page 55

The User Boundary View



- Some of my users have a very microscopic view
- More Boundaries = More Interfaces
- Count Data Functions for each application
- Different support groups/budget = Different Application

Count Data Functions

- Count every physical file as a logical file
- More ILFs and EIFs for the application
- More FTRs for each Transaction



Count Input Data as EIFs



- Since data is coming from an External Application and is referenced by the transaction processing it – Count all External Data as an EIF

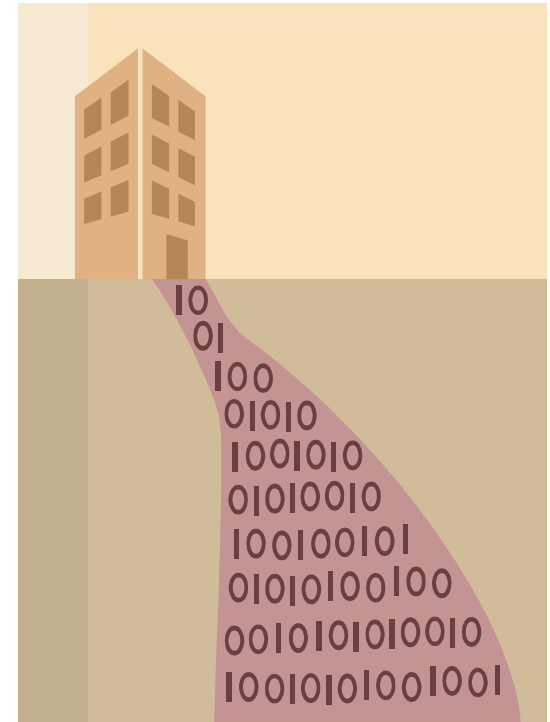
Maintain Reference Data

Count transactions used to make reference data in synch with the originating application.



Code Data

- I have a Functional User Requirement to record this logical group of data that includes value, valid date, invalid date, last update User ID and timestamp
- I have add, change, delete, & display functionality – plus a drop-down list box



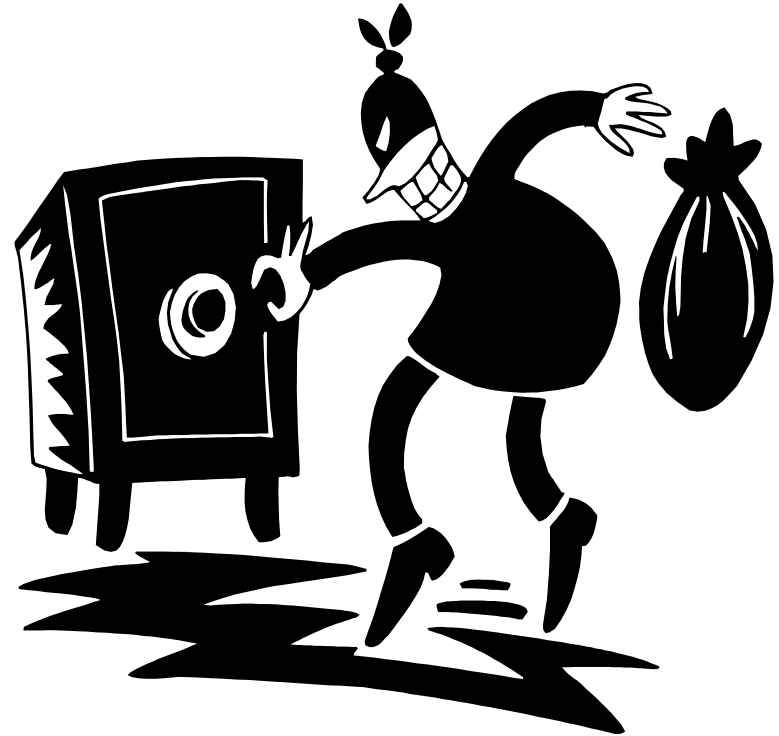
Static Data



- My User requires that they be able to maintain the list of possible responses to 17 different questions; they view each as a different logical entity
- Turns out that all 17 questions had possible responses of yes or no

Security

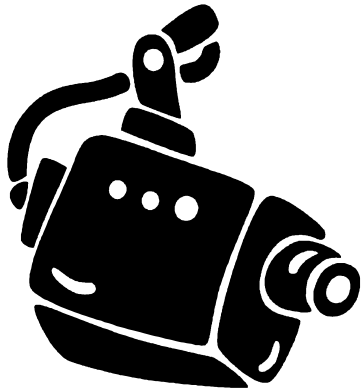
- Each screen checks that the user has valid access to view/update the data based on their security role
- Every transaction has FTR for User Security and Role Permissions



Security Results

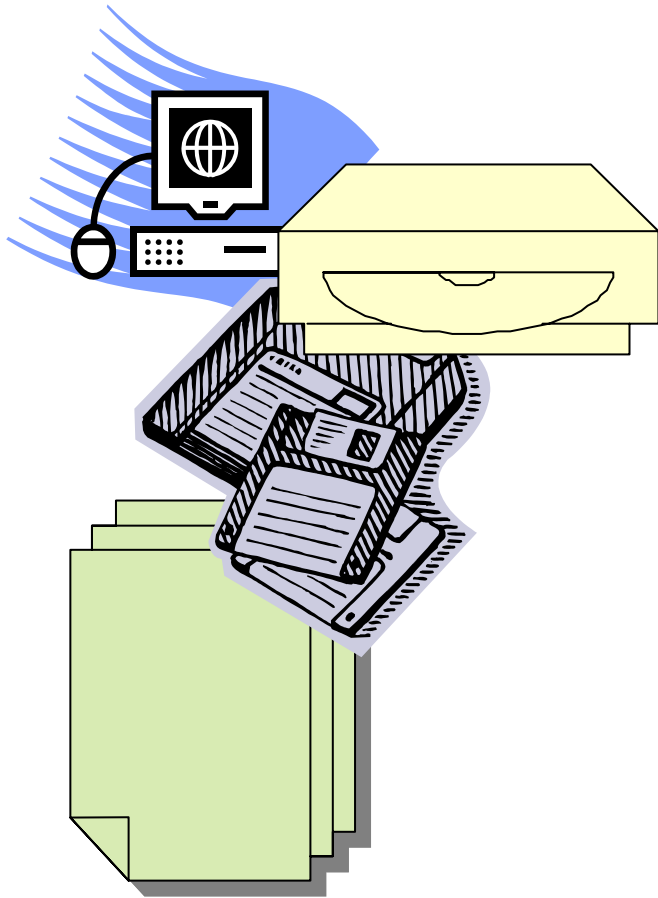
- External Input
 - 3+ FTRs
 - Assume ability to specify the action & messaging
 - 3 user-recognized fields = HIGH Complexity
- External Inquiry or External Output
 - 3+ FTRs
 - Assume ability to specify the action & messaging
 - 4 user-recognized fields = AVERAGE Complexity

Security Disguised as Filtering



- Users can only see the data records security allows them to see
- Processing Logic – “Data is filtered and selected”

Multiple Media



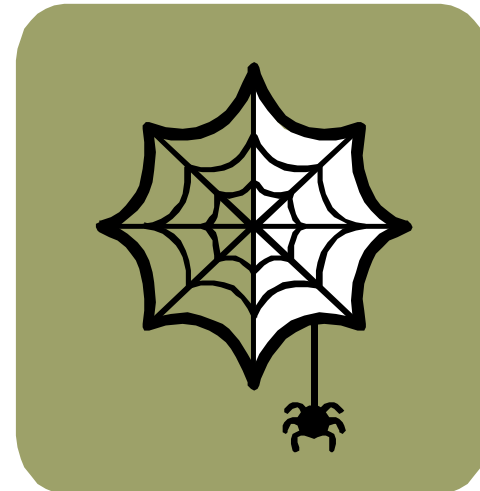
- All transactions may be:
 - Displayed to Screen
 - Downloaded to Excel
 - Printed
 - Saved as a CSV File
- Multiply all outputs by 4

Multiple Media

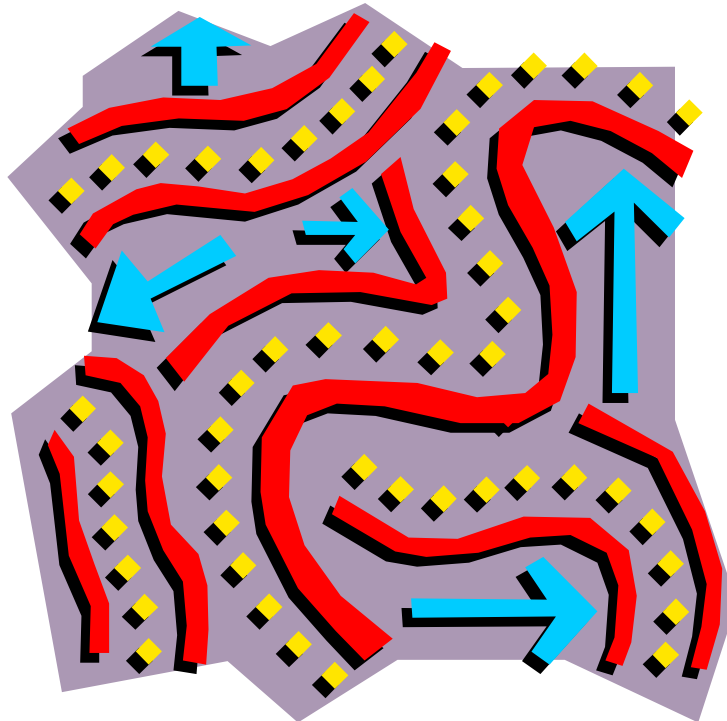
- All Outputs Can be Expressed as:
 - Screen
 - Report
 - Clustered Column Chart
 - Stacked Column Chart
 - 100% Stacked Column Chart
 - 3-D Column Chart
 - Line Chart
 - Stacked Line Chart
 - 100% Stacked Line Chart
 - Pie Chart
 - XY Scatter Chart
 - Area Chart
 - Scatter Chart with data points connected by lines
 - Stacked Area Chart
 - 100% Stacked Area Chart
 - Doughnut Chart
 - Radar Chart
 - 3-D Surface Chart
 - Contour Surface Chart
 - Bubble Chart
 - CSV File
 - XML File
- Multiply Outputs by **22**

Web Front End

- Portal an existing output to a web site
- Different support team
- Different language / architecture



Count Optional Data as Elementary Process



- Mailing Address can be Street Address or PO Box
- US or Canadian – ZIP Code (9 digit) or Postal Code
- 4 possible paths – 4 processes

Optional Data

- Item Order with no size or color
- Item Order with size & color
- Item Order with size, but not color
- Item Order with color, but no size
- COD Sale, Credit Sale, Debit Card Sale
- With or Without Sales Taxes
- Standard Shipping, Expedited Shipping, Free Standard Shipping over \$50

Send Me an E-Mail

- In addition to any confirmation and error messages that may occur interactively, send a file or e-mail with the errors or confirmation of the process



Old Rules

- If all else fails use an earlier copy of the CPM
 - Superfiles
 - Multiple Media

